

MONTHLY MEMBERSHIP PROGRESS REPORT

LOCATION ENGLAND

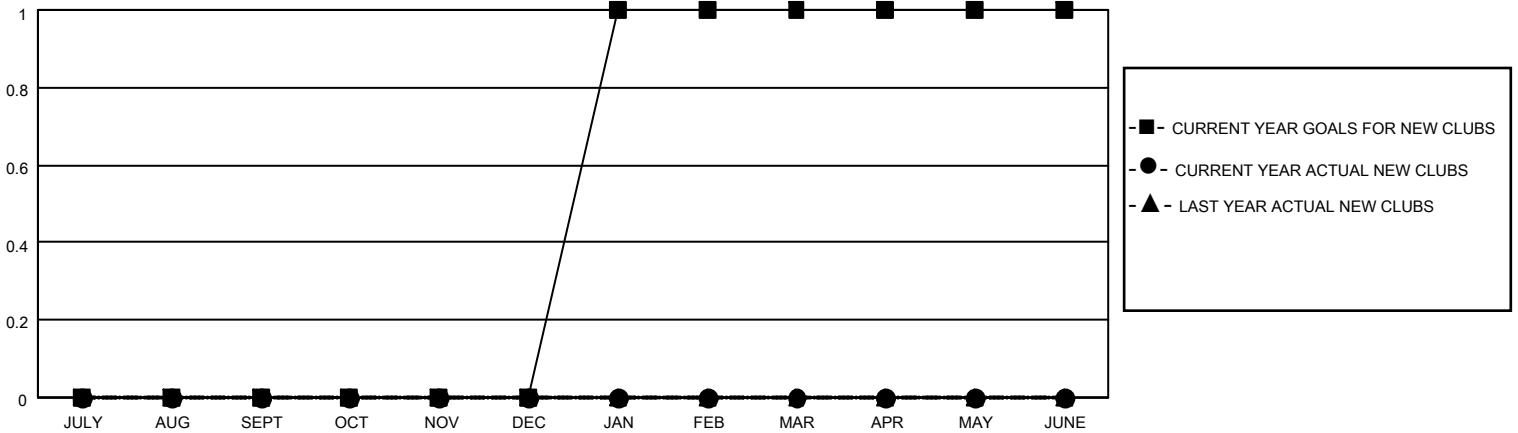
District 105 A

Results as of: 5/31/2021

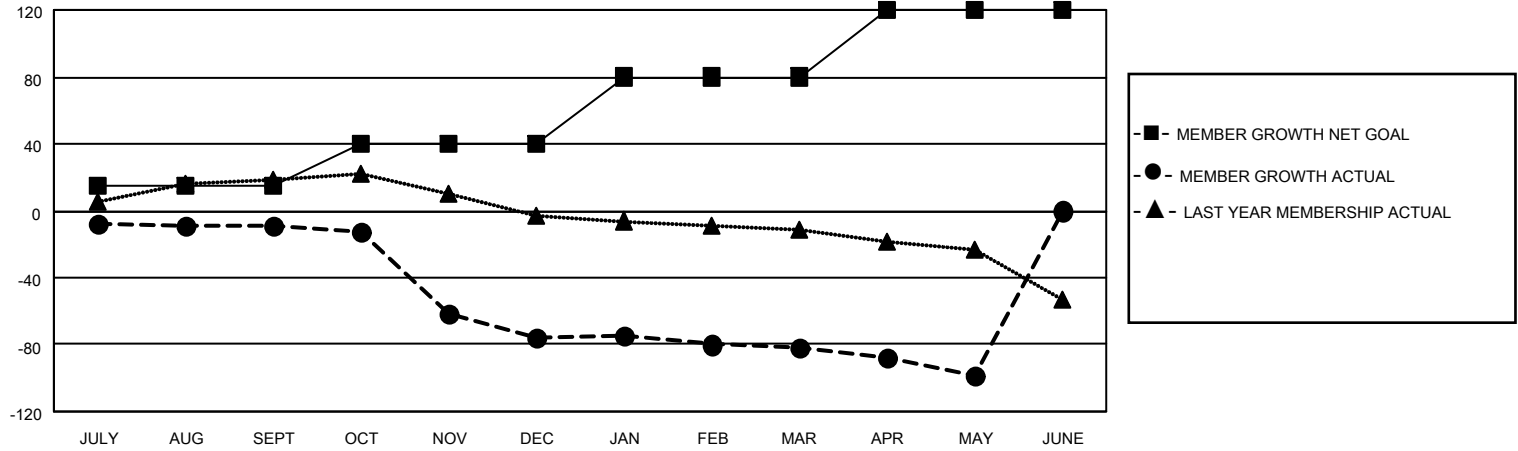
Clubs			
RESULTS FOR 2020-2021			
QUARTER	NEW CLUB GOAL	NEW CLUBS	DROPPED CLUBS
JULY/AUG/SEPT	0	0	1
OCT/NOV/DEC	0	0	0
JAN/FEB/MAR	1	0	0
APR/MAY/JUNE	0	0	1

Members			
RESULTS FOR 2020-2021			
QUARTER	MEMBER GROWTH NET GOAL	MEMBER GROWTH ACTUAL	DROPPED MEMBERS ACTUAL (including transfers)
JULY/AUG/SEPT	15	10	19
OCT/NOV/DEC	25	18	75
JAN/FEB/MAR	40	9	13
APR/MAY/JUNE	40	10	21

GOALS AND ACTUAL NEW CLUBS CUMULATIVE



GOALS AND ACTUAL MEMBERS CUMULATIVE



DROPPED CLUBS: 2	18 CLUBS OF 63 ADDED 1 OR MORE NEW MEMBERS	<u>GENDER DISTRIBUTION</u> MALE 907 (76.73%) FEMALE 275 (23.27%)
<u>DROPPED MEMBERS</u> DECEASED 7 CLUB CANCELLED 0 OTHER 121 <hr/> TOTAL 128	CLICK HERE FOR CUMULATIVE MEMBERSHIP DATA	TOTAL FAMILY UNIT MEMBERS 76 FAMILY MEMBERS PAYING HALF DUES 38